

physics[®] forceps



DIRECTA

DirectaDentalGroup

DIRECTA topdental **ORSING** parkell **physics** forceps RØNVIG TrollDental Sendoline **CONTACEZ**

physics[®] forceps

What is it?

The Physics Forceps are an atraumatic extraction system that provides a simple, predictable and unconventional method of extracting teeth regardless of a practitioner's extraction experience, or the condition of the tooth, while providing a positive patient experience.

How does it work?

The Physics Forceps operate as an elevator, rather than forceps, using first-class lever mechanics. One handle is connected to a "bumper," which acts as the fulcrum, that is placed deep in the vestibule. The other handle is connected to the "beak", which is positioned most often on the lingual or palatal root of the tooth into the gingival sulcus. No aspect of the instrument grasps the crown and there is no advanced elevation needed. Once the instrument is properly placed, the handles are rotated a few degrees with only wrist movement in a slow, steady and controlled manner - no squeezing!

When to use?

The Physics Forceps are effective in most cases, including decayed or broken down teeth, endodontically treated teeth, fractured or fragile teeth, curved or long rooted molars and cuspids, or any tooth that would historically be challenging with conventional instrumentation. The Physics Forceps are ideal for implantologist that wants to preserve the surrounding bone and tissue in preparation for dental implants

Why it works?

The Physics Forceps place a constant and steady load on the tooth, allowing "creep" to build, releasing hyaluronic acid, resulting in the break down of the periodontal ligaments. Studies have proven this breakdown occurs in a much faster time period than conventional methods that employ intermittent, rocking or brute strength types of forces.





**Physics
Forceps®
Standard
Series**

page 4-5



**Physics
Forceps®
Molar
Series**

page 6-7



**Physics
Forceps®
Pedodontic
Series**

page 8-9

Physics Forceps® Standard Series

The Physics Forceps Standard Series extraction instruments can be utilized on all teeth in the mouth with the exception of third molars. In some instances, due to patient access and the design of the instruments, the Standard Series may not access "hard-to-reach" second molars. In these cases, the Molar Series should be utilized.

GMX 100-200 Standard Series kit

GMX 100UR - Upper Right

GMX 100UL - Upper Left

GMX 100UA - Upper Anterior

GMX 200LU - Lower Universal

Also Includes: 24 Bumper Guards

GMX 200LU
Lower Universal
6 Bumper Guards

GMX 100UA
Upper Anterior
6 Bumper Guards

GMX 100UR
Upper Right
6 Bumper Guards

GMX 100UL
Upper Left
6 Bumper Guards

Bumper Guards

The bumper guards are disposable (single-use) made with non-latex materials.

Bumper Guards for GMX50,100-200 standard and pedodontic Series

Package of: 24 pcs, 48 pcs, 96 pcs



**Bumper Guards for GMX50,
100-200 standard and pedodontic Series**
Package of: 24 pcs, 48 pcs, 96 pcs



**Physics
Forceps®
Standard
Series**



Physics Forceps® Molar Series

Our patented Beak & Bumper technique makes difficult molar extractions easier than ever, with just two instruments that allows for bumper placement on the buccal or lingual side of the tooth. This is unique to the Molar Series. The Molar Series is an excellent addition to the Standard Series to access “hard-to-reach” second molars and erupted third molars that you cannot access with the Standard Series.

GMX 400-Molar Series Kit

GMX 400EZ1 Instrument

GMX 400EZ2 Instrument

Also Includes: 12 Bumper Guards

GMX 400EZ1

6 Bumper Guards

GMX 400EZ2

6 Bumper Guards

Bumper Guards

The bumper guards are disposable (single-use) made with non-latex materials.

Bumper Guards for GMX 400 Molar Series

Package of: 24 pcs, 48 pcs , 96 pcs



Bumper Guards for GMX 400 Molar Series

Package of: 24 pcs, 48 pcs , 96 pcs



**Physics
Forceps®
Molar
Series**



EZ1



EZ2



Physics Forceps® Pedodontic Series

The Physics Forceps Pedodontic Series extraction instruments are specially designed for primary teeth.

GMX 50 Pedodontic Series kit

GMX 50UR - Upper Right – Upper molars, Upper canines

GMX 50UL - Upper Left – Upper molars, Upper canines

GMX 50UA - Upper Anterior - Incisors

GMX 50LU - Lower Universal – All lower primary teeth

Also Includes: 24 Bumper Guards

GMX 50LU Lower Universal

Pedodontic Lower Universal – Extracts all lower primary teeth.
6 Bumper Guards

GMX 50UA Upper Anterior

Pedodontic Upper Anterior - Extracts incisors teeth.
6 Bumper Guards

GMX 50UR Upper Right

Pedodontic Upper Right – Extracts Upper molars, Upper canines teeth.
6 Bumper Guards

GMX 50UL Upper Left

Pedodontic Upper Left – Extracts Upper molars, Upper canines teeth.
6 Bumper Guards

Bumper Guards

The bumper guards are disposable (single-use) made with non-latex materials.

Bumper Guards for GMX50,100-200 standard and pedodontic Series

Package of: 24 pcs, 48 pcs, 96 pcs



**Bumper guards for GMX50,
100-200 standard and pedodontic Series**

Package of: 24 pcs, 48 pcs, 96 pcs



**Physics
Forceps®
Pedodontic
Series**





Golden Package Combo Standard and Molar Kit

GMX 400 Molar Series Kit
EZ1 & EZ2 Instruments
GMX 400 Series Bumper Guards, 12 pcs

GMX 100-200 Standard Series Set
Upper Right, Upper Left,
Upper Anterior & Lower Universal Instruments
GMX50,100-200 Bumper Guards, 24 pcs



physics
for cepts

Product Numbers

Kit

<p>GMX 100-200 Standard Series Kit GMX 100UR - Upper Right GMX 100UL - Upper Left GMX 100UA - Upper Anterior GMX 200LU - Lower Universal Also Includes: 24 Bumper Guards</p>	506127
<p>GMX 400 Molar Series Kit GMX 400EZ1 Instrument GMX 400EZ2 Instrument Also Includes: 12 Bumper Guards</p>	506126
<p>GMX 50 Pedodontic Series Kit GMX 50UR - Upper Right – Upper molars, Upper canines GMX 50UL - Upper Left – Upper molars, Upper canines GMX 50UA - Upper Anterior - Incisors GMX 50LU - Lower Universal – All lower primary teeth Also Includes: 24 Bumper Guard</p>	506125
<p>Golden Package Combo kit GMX 100-200 series kit GMX 400 kit Also includes: GMX50,100-200 bumper guards, 24 pcs, GMX 400 bumper guards 12</p>	506128

Forceps

GMX 200LU - Lower Universal, also includes 6 Bumper Guards	506109
GMX 100UA - Upper Anterior, also includes 6 Bumper Guards	506108
GMX 100UR - Upper Right, also includes 6 Bumper Guards	506107
GMX 100UL - Upper Left, also includes 6 Bumper Guards	506106
GMX 400EZ1 - Molar Series, also includes 6 Bumper Guards	506105
GMX 400EZ2 - Molar Series, also includes 6 Bumper Guards	506104
GMX 50LU - Pedodontic Lower Universal – Extracts all lower primary teeth, also includes 6 Bumper Guards	506100
GMX 50UA - Pedodontic Upper Anterior - Extracts incisors teeth, also includes 6 Bumper Guards	506101
GMX 50UR - Pedodontic Upper Right – Extracts Upper molars, Upper canines teeth, also includes 6 Bumper Guards	506102
GMX 50UL - Pedodontic Upper Left – Extracts Upper molars, Upper canines teeth, also includes 6 Bumper Guards	506103

Bumper Guards

GMX50,100-200 - Bumper guards for GMX50,100-200 standard and pedodontic series, 24 pcs	506120
GMX50,100-200 - Bumper guards for GMX50,100-200 standard and pedodontic series, 48 pcs	506121
GMX50,100-200 - Bumper guards for GMX50,100-200 standard and pedodontic series, 96 pcs	506122
GMX 400 - Bumper Guards for GMX 400 molar series, 24 pcs	506117
GMX 400 - Bumper Guards for GMX 400 molar series, 48 pcs	506118
GMX 400 - Bumper Guards for GMX 400 molar series, 96 pcs	506119

How
does
it work?



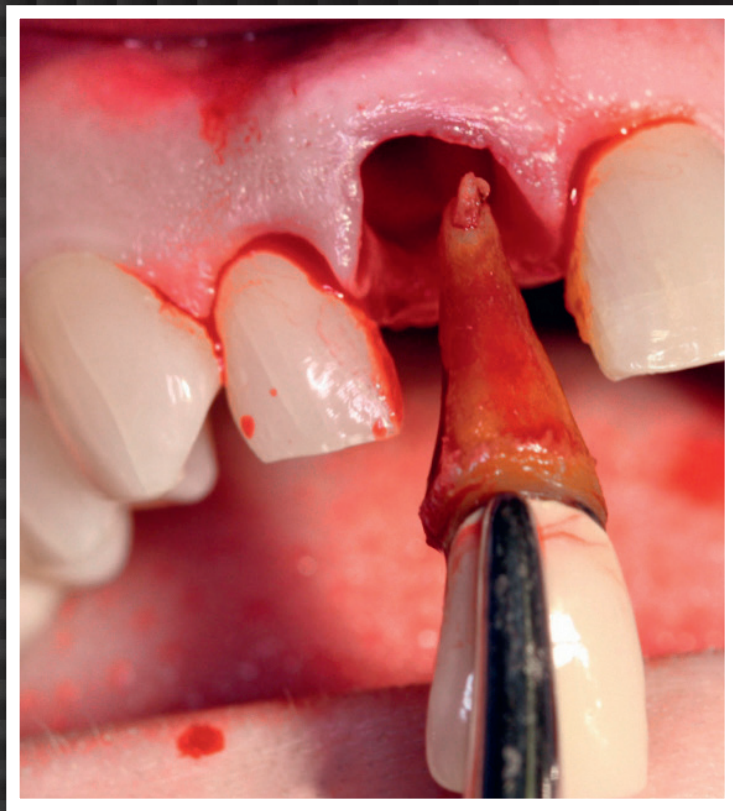
1|



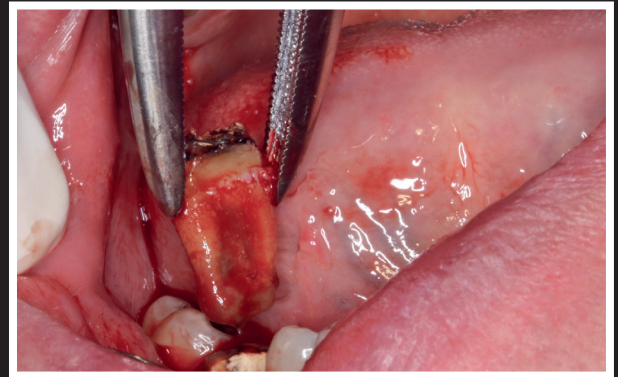
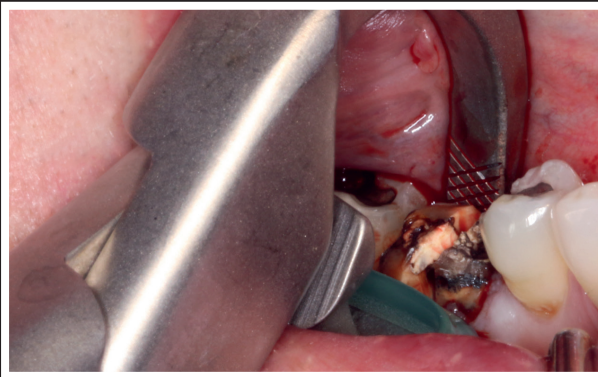
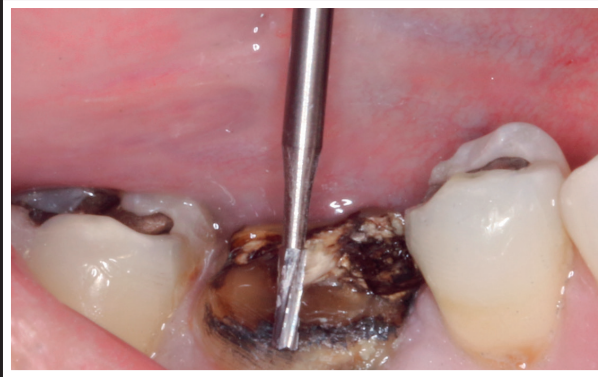
2|



3 |

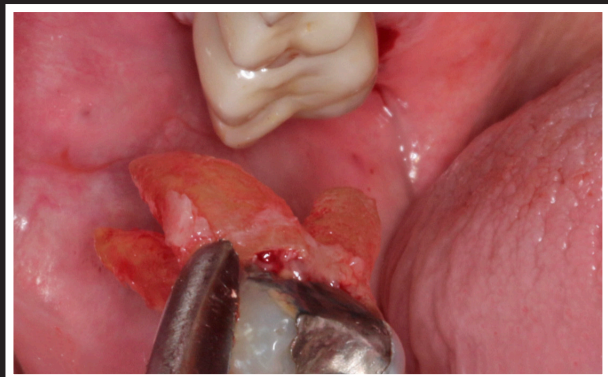
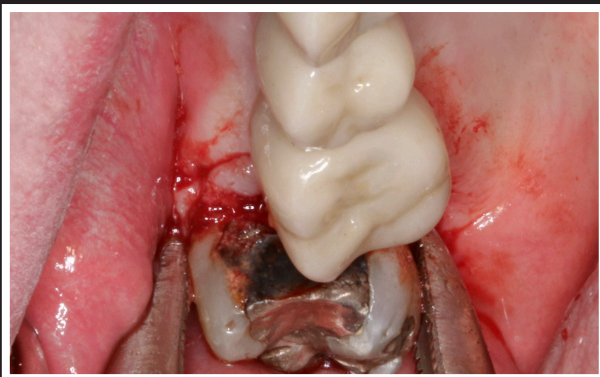
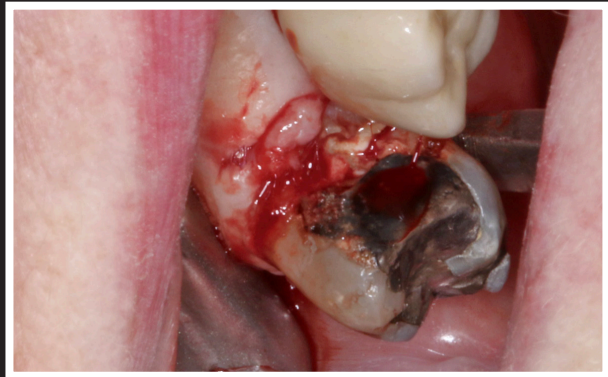
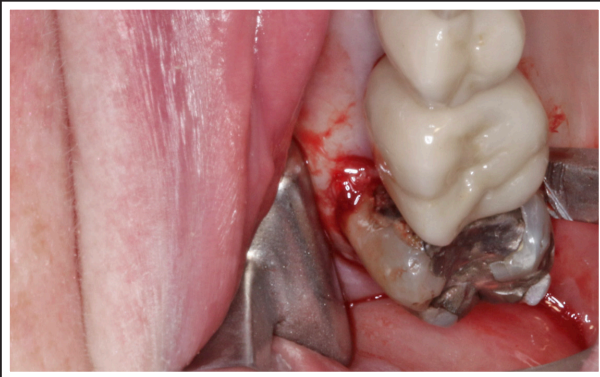


4 |



Lower Molar Extraction

Lower molars that have divergent roots should be sectioned and extracted as two separate individual roots. The narrow beak can easily engage each individual root of the sectioned tooth as depicted in this case. Upper molars do not need to be sectioned prior to using the Physics Forceps.



Upper Molar Extraction

In this case, the distal elevator is utilized prior to using the Physics Forceps to prevent any removal of tuberosity during the extraction of the tooth. Multi-rooted upper molars, even with narrow curved roots, do not need to be sectioned or elevated prior to use of the Physics Forceps. Do not deliver tooth with Physics Forceps-use our tooth delivery instrument Luxator Forte or conventional instrument.

Directa's products are developed,
tested and evaluated by our selected
team of highly-qualified and renowned
Swedish and international dental
professionals. The aim is to make life
easier for all dental professionals in
their daily clinical work



DIRECTA AB

P.O. Box 723,
194 27 Upplands Väsby, SWEDEN
+46 8 506 505 75
info@directadental.com

DIRECTA INC

64 Barnabas Road, Unit 3
Newtown, CT 064 70, USA
203.491.2273
infousa@directadental.com

For More Information Please Call Sure Dental 1.888.277.2335

DirectaDentalGroup

DIRECTA topdental **ORSING** parkell **physics** forceps **RÖNVIG** TrollDental **Sendoline** **CONTACTEZ**